



Python  
Academics  
Tokyo

Kinder—G1~G6  
13+Can join Solo

# **A Summer Program in Palawn**

## **—Tokyo West International School Summer Program—**

Cultural exchange at a local school and beach cleanup volunteering in Palawan.



# Program Summerly

**Duration :** ① July 27 – August 10 ② August 10 – 22 (up to 10 participants)  
20 participants (a parent and child are counted as one participant)  
13 days (arrival on Sunday, departure on Friday of the following week)

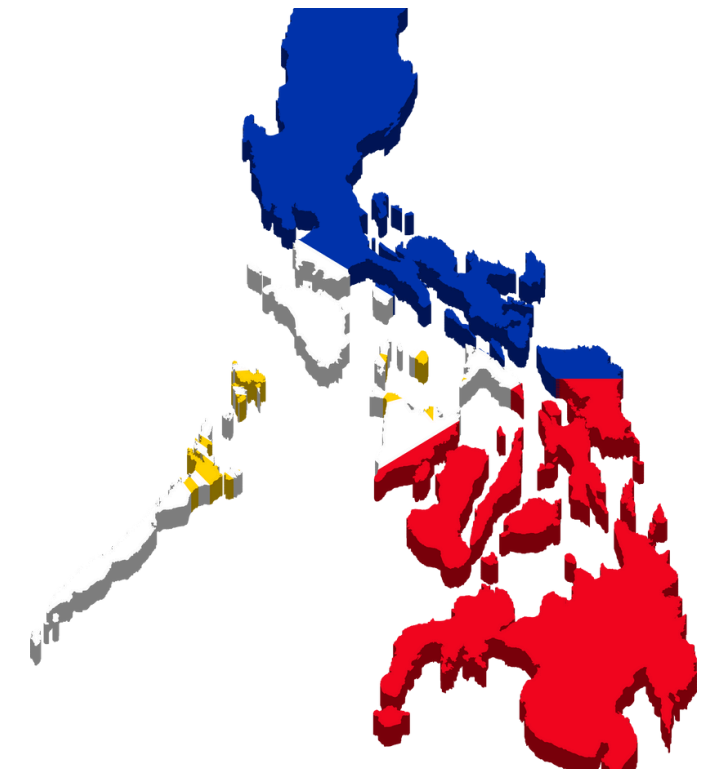
**Eligible Ages :** Parent-child: ages 3–14  
Solo recommended 15+  
Under 15 solo WEG required at embassy

**Accommodation :** Hotel Standard

**Country :** Philippines Palawan

**Program :** Join our summer volunteer program in Palawan, Philippines, for a unique parent-child experience. This 13-day program includes:

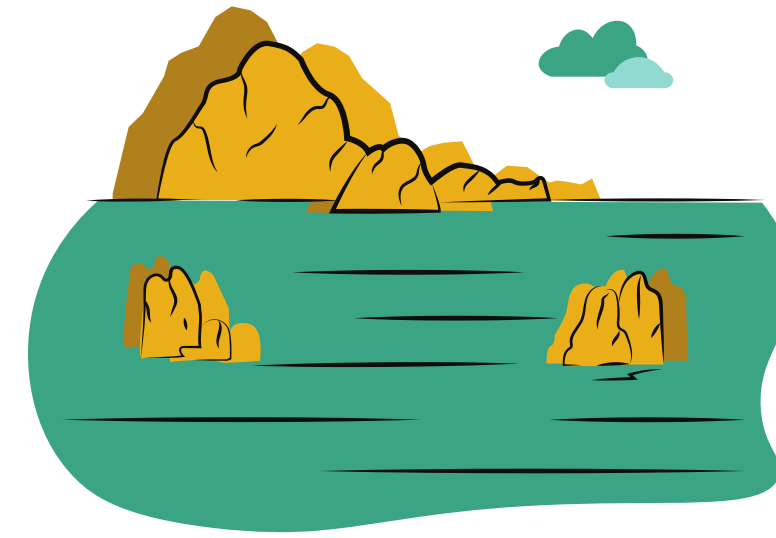
- Week 1: Attending a local private school
- Week 2: Exploring Palawan's tourist spots + volunteer activities
- Local staff will accompany participants throughout the program.



# Palawan

# Phillipin-Palawan

The world's most beautiful island where nature and culture come together.



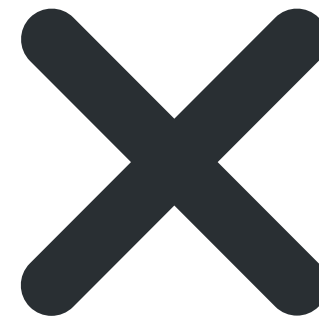
In recent years, Palawan Island in the Philippines has consistently been ranked as the “Most Beautiful Island in the World” by renowned travel magazines. With its vibrant turquoise lagoons, powdery white sand beaches, dramatic limestone cliffs, hidden coves, and mysterious caves, Palawan offers breathtaking scenery surrounded by crystal-clear waters and countless islands. From the divine paradise of Coron to secluded beaches nestled among rocky mountains and UNESCO World Heritage-listed parks, this island is a dream destination for lovers of stunning landscapes and hidden gems.



# Palawan Program

## Week 1: Local Private School Week

- Study abroad experience at a private local school
- Immerse yourself in the local culture and education system



## Week 2: Cultural Experience and Beach Cleaning Volunteer Week

Tourist Attractions, Cultural Experiences, and  
Volunteer Activities such as Beach Cleaning





# WEEK 1: LOCAL PRIVATE SCHOOL WEEK

**Sun**

## Arrive at Puerto Princesa Airport

Local staff will greet you at the airport and transfer to the hotel  
Orientation for the next day

**Mon**

## Monday:

- Attend a local private school, 7:00 AM to 3:30 PM.
- On the first day, you'll travel with a guide by tricycle from the hotel to school.
- Parents of younger students should accompany their child for drop-off and pick-up.

**Tue**

## Tuesday to Friday:

- Travel to and from school by tricycle on your own (this is part of the cultural experience).
- Parents of younger students are responsible for transportation.

**Wed**

**Emergency Support:** A Japanese coordinator is available via LINE or WhatsApp for emergencies.

**Thu**

## Meals:

- Breakfast: provided by staff the night
- Lunch: Eat at the school's shop or cafeteria (bring cash).
- Dinner: Typically at a nearby restaurant, within walking distance or a 10-minute tricycle ride (self-pay).

**Fri**

## Weekends:

**Sat**

- Free days. Additional activities or tours can be arranged for an extra fee.





# WEEK 2: CULTURAL EXPERIENCE AND BEACH CLEANING VOLUNTEER WEEK

Sun

From Monday to Thursday

Mon

The schedule may change slightly, but generally, you will be accompanied by the coordinator.

Tue

Monday:

- AM: Organic farm tour + lunch
- PM: Palawan Museum

Wed

Tuesday:

- AM: Beach cleaning

Wednesday:

- AM: Introduction to the Palawan tribe
- PM: Crocodile farm

Thu

Thursday:

- AM: Free time
- PM: World War II Museum + souvenir shop

Fri

Sat







# Local Private School Week



LifeCollege is an advanced learning hub accredited by the Department of Education, offering a wide range of courses from pre-kindergarten to senior high school. It is particularly known for its "Global Citizenship Class," an overseas study program that has sent over 400 Palawenos (people from Palawan) to countries such as Singapore, Malaysia, Indonesia, Thailand, Vietnam, New Zealand, and Australia since 2008.

## Valuable Experiences in One Week

Contributing to the Community and Learning

At LifeCollege, there are various community service activities, especially programs that support children in impoverished areas. Through the experience of attending school alongside local children, you can immerse yourself in the Philippine educational system and daily life, gaining a deep understanding of the culture. This experience not only improves your English skills but also broadens your perspective by helping you appreciate different values in an international environment.

## Diverse Curriculum and Creative Activities

Even in a short time, you can participate in workshops and learning activities that foster creative thinking. Experience the joy of learning and discovery through everyday activities.





## **Week 2: Cultural Experience and Beach Cleaning Volunteer Week**



This program offers a valuable opportunity to deepen learning and personal growth while engaging with the local nature, culture, history, and social issues. At the history museum, you will learn about the past of Palawan, and at the organic farm, you will understand the importance of environmentally friendly farming and the concept of local consumption. Through the beach clean-up activity, you will naturally raise your awareness about environmental conservation and realize that you can make a difference.

A visit to the crocodile farm provides an opportunity to reflect on ecosystems and animal protection, while an introduction to the indigenous Palawan people enhances your understanding of diverse values and cultures. The World War II museum offers a chance to reflect on history's significance and reconsider the importance of peace. Additionally, through interactions at the souvenir shop, you will expand your understanding of the role of local economies and tourism.

This program is not only about gaining knowledge as a learner, but also about expanding your horizons by seeing, experiencing, and feeling firsthand, making it a great step in nurturing your international perspective.



# Accommodation



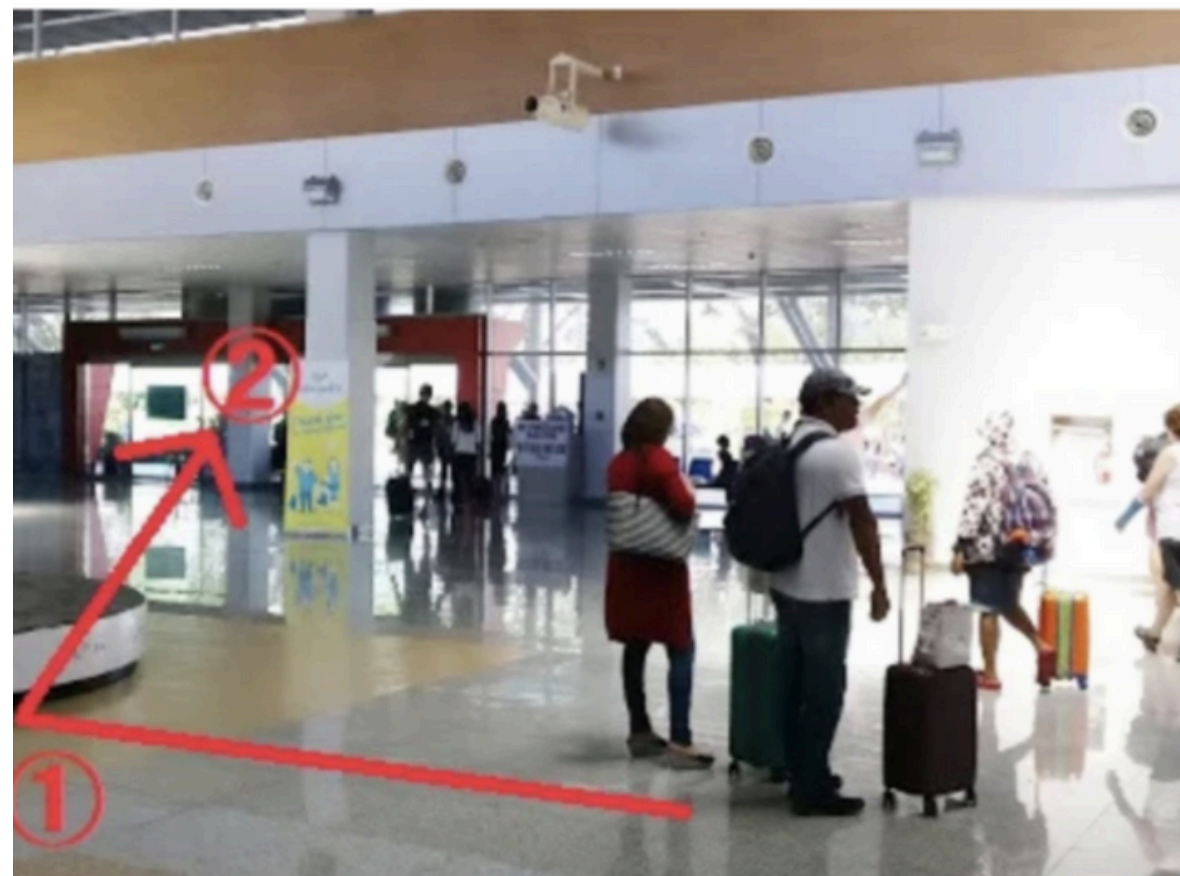
## Hotel Standard room

※For parent-child participation, the same room as shown in the photo will be provided.

# Pick-up at Puerto Princesa Airport



After descending the stairs, it is a short walk to the terminal.



**There is only one exit,  
so you won't get confused!**

Please collect your luggage and proceed to exit ②. Our local staff will be waiting to greet you at the exit.



# Fee

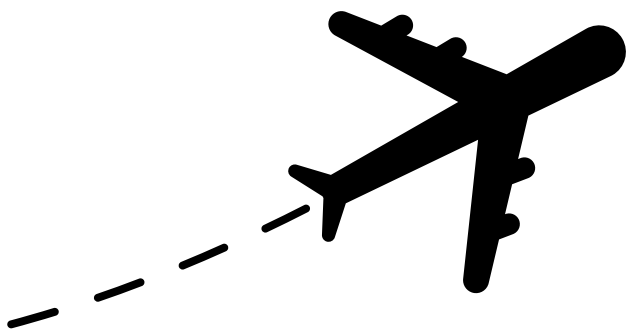
215,000 JPY (2 weeks) for 2 people (parent and child).

165,000 JPY (2 weeks) for 1 person (ages 13 and up).

Included in the fee: Hotel accommodation, breakfast, airport transfers, activity transfers, activity fees, and assistance from local Japanese staff.

For parent-child participation, you will generally stay in the same room

## Flight and Transfer Information



To reach Palawan Island, a transfer in either Manila or Cebu is required.  
If your child is participating alone, please consider the transfer details carefully.

Estimated flight cost: ¥40,000~ (As of early April 2025)

Booking early tends to result in lower prices.

**For weekend activity fees (for those who have made a reservation), please inquire.**

**Application: Accepted at any time.**  
**Cancellations are possible up to 40 days before departure.**  
**No refunds will be issued after that.**

## **Inquiries & Applications**

If you have any questions about the program, feel free to contact us via our official  
LINE anytime! ⇒

We will guide and support you with the application process through LINE or Email.

E-mail: [company@python-academics.com](mailto:company@python-academics.com)

